

SUPPLEMENTAL ASSEMBLY INSTRUCTIONS

PACKAGE CONTENTS

Frame Assembly

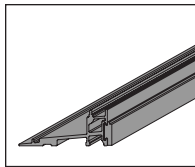
- (1) Sill
- (2) Side Jambs
- (1) Head Jamb
- (2) Corner keys
- (2) Clad extrusion gaskets
- (2) Rectangular gasket

Panel Installation

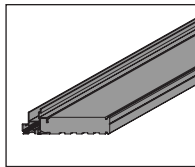
- (1) Operating Panel
- (1) Stationary Panel
- (1) Upper panel track
- (1) Interior stationary side filler
- (2) Exterior fillers
- (1) Interior head stop
- (1) Pile weatherstrip pad
- (1) Rubber bumper
- (1) Handle set

Screws

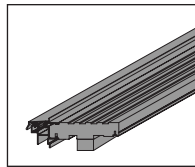
- (21) #8 x 3/4" screws - for frame assembly
- (1) #8 x 3/4" screw - to secure fixed panel clip
- (15) #7 x 3/4" screws - to secure exterior fillers
- (4) #7 x 3/4" screws - to secure stat. panel at sill
- (8) #7 x 3/4" screws - to secure upper panel track
- (10) 11/4" nails - to secure interior stat. side filler
- (1) #6 x 11/2" screws - to secure rubber bumper



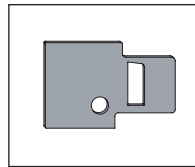
Sill



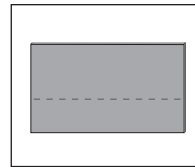
Side Jamb



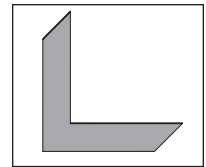
Head Jamb



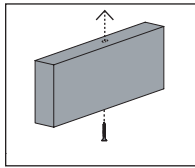
Clad Extrusion Gaskets



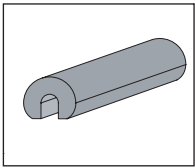
Rectangular Gasket



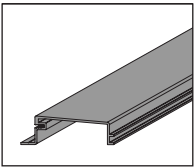
Corner Keys



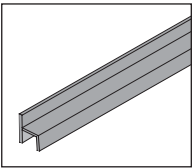
Rubber Bumper at Head Jamb



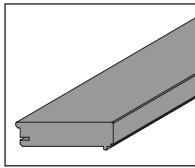
Rubber Bumper at Sill Track



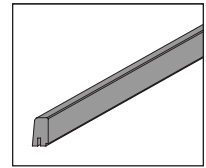
Exterior Side Filler
Exterior Head Filler



Upper Panel Track (sits on top of operating panel)



Interior Stationary Side Filler



Interior Head Stop

Note: For questions, call us at (800) JELD-WEN / (800) 535-3936.

TOOLS AND MATERIALS

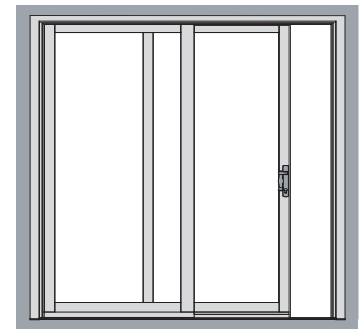
- High quality, clear, silicone sealant
- Phillips screwdriver

ASSEMBLE FRAME

⚠ Handling patio door panels and components can be heavy and awkward. Please use the help of other people while performing the next steps.

The frame is already handed and is not field reversible.

- Lay out frame components in a large, flat workspace.



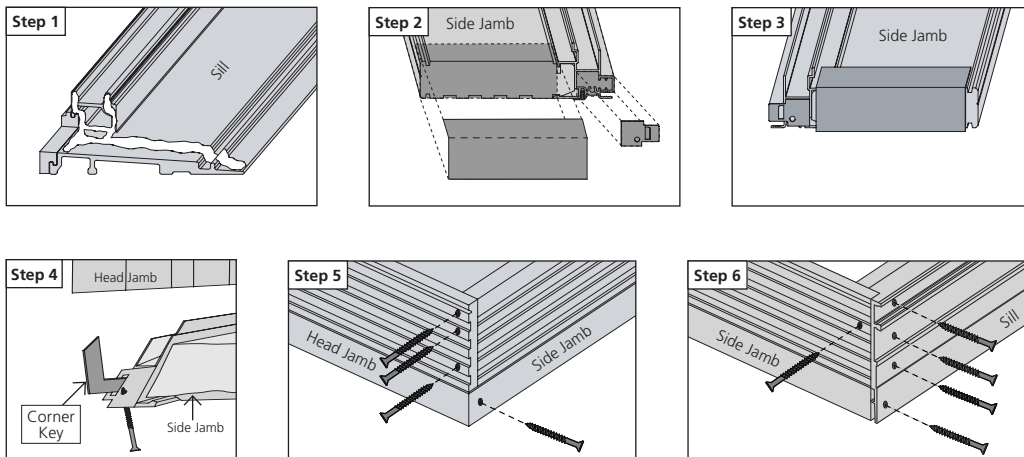
Do-It-Yourself

Technician

The advice offered herein can be done by a homeowner with some mechanical aptitude. If you are unsure, it is recommended that you hire a trained service provider such as a competent and licensed construction contractor or building professional. JELD-WEN disclaims any and all liability associated with the use and/or provision of these instructions. Any reliance upon the information or advice is at the risk of the party so relying. The information contained herein may be changed from time to time without notification.

© 2005 JELD-WEN, inc. JELD-WEN, Pozzi, and Pozzi Wood Windows are registered trademarks of JELD-WEN, inc., Oregon USA.

RELIABILITY for real life®



1. On the sill piece, apply a continuous bead of silicone at each end as shown.
2. Seal the **top** of each side jamb piece as follows:
 - Place the clad extrusion gasket on the open end of the clad extrusion as shown.
 - Apply a rectangular, grey gasket to the wood portion of the top of each side jamb.
3. Seal the **bottom** of each side jamb piece as follows:
 - Place the clad extrusion gasket on the open end of the clad extrusion as shown.
 - Apply a rectangular, grey gasket to the wood portion of the bottom of each side jamb.
4. Secure the head and side jamb frame pieces as follows:
 - Start a #8 x 2" screw through the top of each side jamb.
 - Insert a corner key through the designated slot in the clad extrusion gasket. Align the side jambs with the head jambs, inserting the corner keys into the head jamb.
 - Drive the #8 x 2" screw into the head jamb ends to secure.
5. Drive three #8 x 2" screws through both ends of the head jamb as shown.
6. Secure the sill as follows:
 - Align the sill to the side jambs.
 - Drive a #8 x 2" screw through the pilot hole at the bottom of each side jamb. The screws should engage the screw boss on the sill. Advance screw until the jambs and sill are flush.
Note: Be careful not to damage the gasket at the bottom of the side jambs.
 - Drive a #8 x 2" screw through the bottom of the sill into the side jambs through the pilot holes at each end of the sill.

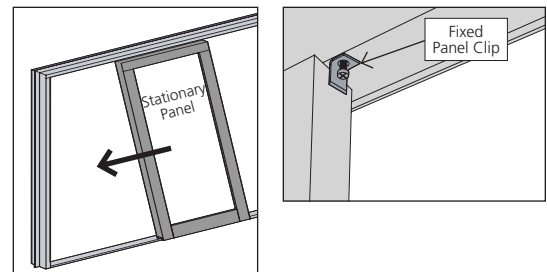
INSTALL PATIO DOOR

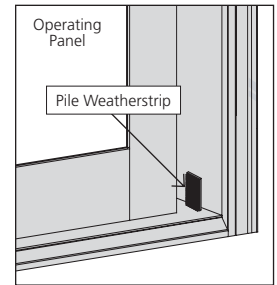
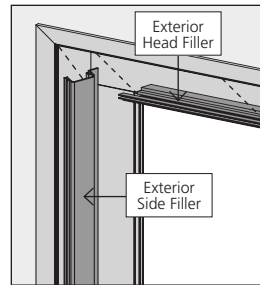
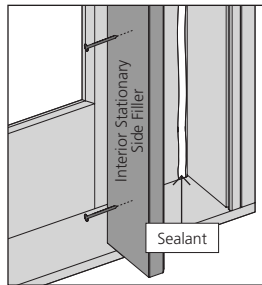
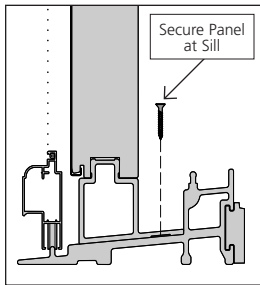
Use the JELD-WEN installation instructions attached to the product (also available at www.jeld-wen.com/resources) to install the patio door. Perform the following steps in conjunction with the installation instructions.

- After the patio door frame is in the wall (rough opening) and properly shimmed,
 - Fasten the patio door through the nailing fin 6" from the bottom corners.
 - Install the stationary panels (as described below) to help square the frame.
 - Continue with the JELD-WEN installation instructions.

INSTALL STATIONARY PANEL

1. From the **exterior**, install the stationary panel into the exterior frame track as follows:
 - Tip the panel into the header track.
 - Swing the bottom of the panel up and over the sill track.
 - Slide the panel tightly up against the side jamb.
2. Use a #8 x 3/4" screw to secure the panel to the head jamb with the fixed panel clip (already installed into the top rail of the panel).





3. Secure the panel at the sill with four #7 x 3/4" screws spaced evenly across bottom of panel.
4. From the interior, apply a bead of silicone where the stationary panel meets the jamb from head to sill.
5. Set the interior stationary side filler into place against the bead of sealant and secure with 1 1/4" nails spaced every 6"-8". Set nails below surface and putty, if desired.
6. On the exterior, use #7 x 3/4" screws to secure the exterior head and side fillers into the operating panel head and side jamb. Locate the screws behind the weatherstrip. The filler pieces should sit flush to the exterior side of the frame on the operating panel jambs.
7. Place the pile weatherstrip pad on the operating side jamb where it meets the sill. This pad is critical to preventing air infiltration.

INSTALL OPERATING PANEL

⚠ Handling patio door panels can be heavy and awkward. Please use the help of other people while performing the next steps.

From the interior,

1. Orient the upper panel track so it sits on top of the panel with the vertical lip facing the interior. Set the bottom of the panel into the sill track and tilt up into a vertical position.
2. Close and lock the door.
3. Secure the stationary side of the upper panel track with #7 x 3/4" screws.
4. Unlock the door and open all the way.
5. Secure the operating side of the upper panel track with #7 x 3/4" screws. Close and lock the door.
6. Snap the rounded rubber bumper onto the sill track against the stationary side jamb.
7. Drill a hole in rectangular rubber bumper with a 9/64" drill bit and secure in place against the stationary side jamb with a #6 x 1 1/2" screw.
8. Install the interior head stop.

